



BUILD THE ELECTRICAL SAFETY TOGETHER



LOW VOLTAGE ELECTRIC

TANGSHAN ZHENGCHENG ELECTRIC CO., LTD.

Company Profile



Founded in 2010 and located in Tangshan city, Hebei province, Tangshan ZhengC-heng Electric Co., Ltd plays a leading role in manufacturing various of low voltage distribution boxes and enclosures used for residential, commercial and industrial area. Relying on its own workshop which is approximately 30,000 square meters in total, ZCEBOX has the ability to produce millions pieces of products annually with it's own complete set of automatic feeding system and the manipulator operation equipment.

Now ZCEBOX have totally 20 injection machines as well other professional machines in order to provide maximum production to customers. Adhering to the independent innovation and scientific management principles, ZCEBOX has its own R&D department to create new products and make 3D drawings, so that the products can satisfy different customers' personalized requirements.

Our vision: To be the most trusted partner of our customer
Our Mission: To create the greatest value for our customer continuously
Our service tenet: Customer-Oriented

Catalog

| | |
|-------------------------------|----|
| DISTRIBUTION BOX | |
| Z10..... | 1 |
| LWDF & LWDS..... | 2 |
| LWDFT & LWDST..... | 3 |
| LWHG..... | 4 |
| LWHT..... | 5 |
| LWHA..... | 6 |
| LWTT..... | 7 |
| LWHC..... | 9 |
| LWSMC..... | 10 |
| JUNCTION BOX | |
| LWHI..... | 11 |
| LWBA & LWBT..... | 13 |
| LWHY..... | 15 |
| LWBM..... | 16 |
| LWHFSC..... | 17 |
| LWAZ..... | 18 |
| LWPVC..... | 19 |
| LOAD CENTER | |
| SPN & TPN consumer units..... | 20 |
| TSM consumer Units..... | 21 |
| LWHLX..... | 22 |
| MCB | |
| LWB1..... | 23 |
| LWBX..... | 25 |
| LWB6..... | 27 |
| LWB1G..... | 29 |
| Z45..... | 30 |
| RCCB | |
| LWL1..... | 31 |
| LWLX..... | 32 |
| LWL6..... | 33 |
| Certification | 34 |



Introduction:

This is classical distribution box which can be equipped with various modular electrics and widely used in household power distribution, industrial and commercial buildings.

Strong adaptability:

- Standard: IEC60439-3 IEC61000
- Approval: CE, RoHS, HF test, IK test, ISO9001
- Protection degree: IP40
- Material: ABS for body and PC for door
- Ambient temperature (°C): -5~+40, 50%humidity permitted under max +40°C
- Storage temperature (°C): -40~+75
- Color of base: White
- Color of door: transparent or white opaque
- Fire resistance: 650°C/30s, 960°C/30s

Models:

Surface Mounting Distribution Boards

| Code | Din Modules | Pack |
|---------|-------------|------|
| Z10-6S | 6 Modules | 30 |
| Z10-8S | 8 Modules | 30 |
| Z10-12S | 12 Modules | 20 |
| Z10-18S | 18 Modules | 10 |
| Z10-24S | 24 Modules | 10 |
| Z10-36S | 36 Modules | 5 |

Flush Mounting Distribution Boards

| Code | Din Modules | Pack |
|---------|-------------|------|
| Z10-6F | 6 Modules | 30 |
| Z10-8F | 8 Modules | 20 |
| Z10-12F | 12 Modules | 20 |
| Z10-18F | 18 Modules | 10 |
| Z10-24F | 24 Modules | 10 |
| Z10-36F | 36 Modules | 5 |



Introduction:

This is classical distribution box which can be equipped with various modular electrics and widely used in household power distribution, industrial and commercial buildings.

Technical specifications:

- Standard: IEC60439-3 IEC61000
- Approval: CE, RoHS, HF test, IK test, ISO9001
- Protection degree: IP40
- Material: ABS for body and PC for door
- Ambient temperature (°C): -5~+40, 50%humidity permitted under max +40°C
- Storage temperature (°C): -40~+75
- Color of base: White
- Color of door: transparent or white opaque
- Fire resistance: 650°C/30s, 960°C/30s

Models:

Surface Mounting Distribution Boards

| Code | Din Modules | Pack |
|---------|-------------|------|
| LWDS-2 | 2 Modules | 300 |
| LWDS-4 | 4 Modules | 30 |
| LWDS-6 | 6 Modules | 30 |
| LWDS-8 | 8 Modules | 30 |
| LWDS-10 | 10 Modules | 20 |
| LWDS-12 | 12 Modules | 20 |
| LWDS-15 | 15 Modules | 15 |
| LWDS-18 | 18 Modules | 10 |
| LWDS-24 | 24 Modules | 10 |
| LWDS-36 | 36 Modules | 5 |

Flush Mounting Distribution Boards

| Code | Din Modules | Pack |
|---------|-------------|------|
| LWDF-2 | 2 Modules | 200 |
| LWDF-4 | 4 Modules | 30 |
| LWDF-6 | 6 Modules | 30 |
| LWDF-8 | 8 Modules | 20 |
| LWDF-10 | 10 Modules | 20 |
| LWDF-12 | 12 Modules | 20 |
| LWDF-15 | 15 Modules | 15 |
| LWDF-18 | 18 Modules | 10 |
| LWDF-24 | 24 Modules | 10 |
| LWDF-36 | 36 Modules | 5 |



Introduction:

This is classical distribution box with plastic cover and metal base(0.8/1.0mm), which can be equipped with various modular electrics and widely used in household power distribution, industrial and commercial buildings.

Technical specifications:

- Standard: IEC60439-3 IEC61000
- Approval: CE, RoHS, HF test, IK test, ISO9001
- Protection degree: IP40
- Material: ABS cover, metal base and PC door
- Ambient temperature (°C): -5~+40, 50%humidity permitted under max +40°C
- Storage temperature (°C): -40~+75
- Color of base: White
- Color of door: transparent or white opaque
- Fire resistance: 650°C/30s

Models:

Surface Mounting Distribution Boards

| Code | Din Modules | Pack |
|----------|-------------|------|
| LWDST-4 | 4 Modules | 30 |
| LWDST-6 | 6 Modules | 30 |
| LWDST-8 | 8 Modules | 30 |
| LWDST-10 | 10 Modules | 20 |
| LWDST-12 | 12 Modules | 20 |
| LWDST-15 | 15 Modules | 15 |
| LWDST-18 | 18 Modules | 10 |
| LWDST-24 | 24 Modules | 10 |
| LWDST-36 | 36 Modules | 5 |

Flush Mounting Distribution Boards

| Code | Din Modules | Pack |
|----------|-------------|------|
| LWDFT-4 | 4 Modules | 30 |
| LWDFT-6 | 6 Modules | 30 |
| LWDFT-8 | 8 Modules | 20 |
| LWDFT-10 | 10 Modules | 20 |
| LWDFT-12 | 12 Modules | 20 |
| LWDFT-15 | 15 Modules | 15 |
| LWDFT-18 | 18 Modules | 10 |
| LWDFT-24 | 24 Modules | 10 |
| LWDFT-36 | 36 Modules | 5 |



Introduction:

LWHG series distribution box is a kind of modularized industrial electrical box. Based on the advantages of being easy to install, widely applied in building electrical distribution system's installation.

Technical specifications:

- Standard: IEC60439-3 IEC61000
- Approval: CE, RoHS, HF test, IK test, ISO9001
- Protection degree: IP30
- Material: ABS
- Ambient temperature (°C): -5~+40, 50%humidity permitted under max +40°C
- Storage temperature (°C): -40~+75
- Color of box: White
- Mounting type: Surface
- Fire resistance: 650°C/30s

Models:

Surface Mounting Distribution Boards

| Code | Din Modules | Pack |
|--------|-------------|------|
| LWHG-1 | 1 Modules | 200 |
| LWHG-2 | 2 Modules | 200 |
| LWHG-4 | 4 Modules | 100 |
| LWHG-6 | 6 Modules | 50 |
| LWHG-8 | 8 Modules | 50 |



Introduction:

The range of surface enclosures LWHT IP65 are designed with a more economical way and keep good protection degree themselves. These enclosures are popularly used among residence and industry.

Technical specifications:

- Standard: IEC60439 IEC61000
- Approval: CE, RoHS, HF test, IK test, ISO9001
- Protection grade: IP65
- Color of base: Gray
- The color of door: Transparent
- Mounting type: Surface
- Material: box shell: ABS; Door: PC; Zero bar/earth bar: copper
- Fire resistance: 650°C /30s
- Ambient temperature (°C): -5~+40, 50% humidity permitted under max +40°C
- Storage temperature (°C): -40~+75

Models:

Waterproof Distribution Boards

| Code | Din Modules | Pack |
|---------|-------------|------|
| LWHT-2 | 2 Modules | 100 |
| LWHT-5 | 5 Modules | 40 |
| LWHT-8 | 8 Modules | 30 |
| LWHT-12 | 12 Modules | 20 |
| LWHT-15 | 15 Modules | 15 |
| LWHT-18 | 18 Modules | 15 |
| LWHT-24 | 24 Modules | 10 |



Introduction:

LWHA series boxes are designed for outdoor usage. ABS body, PC door and rubber seals make the protection level up to IP65. Spacious inner space is suitable for installing large elements in the box and make connection more convenient. Whatever domestic or industrial usage, it is a better choice.

Technical specifications:

- Standard: IEC60439 IEC61000
- Approval: CE, RoHS, HF test, IK test, ISO9001
- Protection degree: IP65
- Material: Box shell: ABS; Door: PC; Zero bar/earth bar: copper
- Ambient temperature (°C): -5~+40, 50% humidity permitted under max +40°C
- Storage temperature (°C): -40~+75
- Color of base: Gray
- Color of door: Transparent
- Mounting type: Surface
- Fire resistance: 650 °C/30s

Models:

Waterproof Distribution Boards

| Code | Din Modules | Pack |
|---------|-------------|------|
| LWHA-4 | 4 Modules | 20 |
| LWHA-8 | 8 Modules | 20 |
| LWHA-12 | 12 Modules | 10 |
| LWHA-18 | 18 Modules | 5 |
| LWHA-24 | 24 Modules | 5 |



Introduction:

- The LWTT range of enclosures are the best available on the market.
- A well engineered project which has been continuously updated and improved has created a wide range of possible variations, Enclosures are available in portrait, landscape and 2 door configurations.
- The main characteristic of the enclosures is the robust construction achieved by a careful mix of design, automated production system and top quality materials, including:
 - High performance technology used for locking systems and hinge pins.
 - Zinc alloy for hinges.
 - Thermosetting epoxy polyester powder coating for finishes.
 - Sheet steel.

Technical specifications:

- Standard: IEC60529
- Certificate: CE
- Material: high-quality cold roll steel
- Color: Ral7032 or Ral7035
- Mounting plate: Orange or Galvanized
- Paint finish: Both externally and internally protected with epoxy polyester coating
- Lock: Plastic or Metal
- Body and door thickness: 1.0-1.5mm
- Mounting plate thickness: 1.2-2.0mm
- IP rate: IP66

Waterproof Metal Boards

| Code | Dimension(H*W*Dmm) | Pack |
|------------|--------------------|------|
| LWTT202015 | 200x200x150 | 1 |
| LWTT252015 | 250x200x150 | 1 |
| LWTT302015 | 300x200x150 | 1 |
| LWTT302020 | 300x200x200 | 1 |
| LWTT302515 | 300x250x150 | 1 |
| LWTT302520 | 300x250x200 | 1 |
| LWTT302525 | 300x250x250 | 1 |
| LWTT303015 | 300x300x150 | 1 |
| LWTT303020 | 300x300x200 | 1 |
| LWTT303025 | 300x300x250 | 1 |
| LWTT403015 | 400x300x150 | 1 |
| LWTT403020 | 400x300x200 | 1 |
| LWTT403025 | 400x300x250 | 1 |
| LWTT403030 | 400x300x300 | 1 |
| LWTT404015 | 400x400x150 | 1 |
| LWTT404020 | 400x400x200 | 1 |
| LWTT404025 | 400x400x250 | 1 |
| LWTT404030 | 400x400x300 | 1 |
| LWTT503015 | 500x300x150 | 1 |
| LWTT503020 | 500x300x200 | 1 |
| LWTT503025 | 500x300x250 | 1 |
| LWTT503030 | 500x300x300 | 1 |
| LWTT504015 | 500x400x150 | 1 |
| LWTT504020 | 500x400x200 | 1 |
| LWTT504025 | 500x400x250 | 1 |
| LWTT504030 | 500x400x300 | 1 |
| LWTT505015 | 500x500x150 | 1 |
| LWTT505020 | 500x500x200 | 1 |
| LWTT505025 | 500x500x250 | 1 |
| LWTT505030 | 500x500x300 | 1 |
| LWTT604015 | 600x400x150 | 1 |
| LWTT604020 | 600x400x200 | 1 |
| LWTT604025 | 600x400x250 | 1 |
| LWTT604030 | 600x400x300 | 1 |
| LWTT605015 | 600x500x150 | 1 |
| LWTT605020 | 600x500x200 | 1 |
| LWTT605025 | 600x500x250 | 1 |

Waterproof Metal Boards

| Code | Dimension(H*W*Dmm) | Pack |
|--------------|--------------------|------|
| LWTT605030 | 600x500x300 | 1 |
| LWTT606015 | 600x600x150 | 1 |
| LWTT606020 | 600x600x200 | 1 |
| LWTT606025 | 600x600x250 | 1 |
| LWTT606030 | 600x600x300 | 1 |
| LWTT606040 | 600x600x400 | 1 |
| LWTT704020 | 700x400x200 | 1 |
| LWTT704030 | 700x400x300 | 1 |
| LWTT705015 | 700x500x150 | 1 |
| LWTT705020 | 700x500x200 | 1 |
| LWTT705025 | 700x500x250 | 1 |
| LWTT705030 | 700x500x300 | 1 |
| LWTT706020 | 700x600x200 | 1 |
| LWTT706025 | 700x600x250 | 1 |
| LWTT706030 | 700x600x300 | 1 |
| LWTT806020 | 800x600x200 | 1 |
| LWTT806025 | 800x600x250 | 1 |
| LWTT806030 | 800x600x300 | 1 |
| LWTT808020 | 800x800x200 | 1 |
| LWTT808025 | 800x800x250 | 1 |
| LWTT808030 | 800x800x300 | 1 |
| LWTT1006020 | 1000x600x200 | 1 |
| LWTT1006025 | 1000x600x250 | 1 |
| LWTT1006030 | 1000x600x300 | 1 |
| LWTT1007020 | 1000x700x200 | 1 |
| LWTT1007025 | 1000x700x250 | 1 |
| LWTT1007030 | 1000x700x300 | 1 |
| LWTT1008020 | 1000x800x200 | 1 |
| LWTT1008025 | 1000x800x250 | 1 |
| LWTT1008030 | 1000x800x300 | 1 |
| LWTT10010025 | 1000x1000x250 | 1 |
| LWTT10010030 | 1000x1000x300 | 1 |
| LWTT1206030 | 1200x600x300 | 1 |
| LWTT1208030 | 1200x800x300 | 1 |
| LWTT12010030 | 1200x1000x300 | 1 |
| LWTT1406030 | 1400x600x300 | 1 |
| LWTT2006030 | 2000x600x300 | 1 |



Introduction:

The new range of surface enclosures LWHC IP66 are composed by 4 parts from 4 to 36 modules. These enclosures are thought for its applications in the high ending market which has luxury and attractive designs. The enclosures are made of polycarbonate plastics and installed inside with dual row terminal bars and aluminium Din-rail.

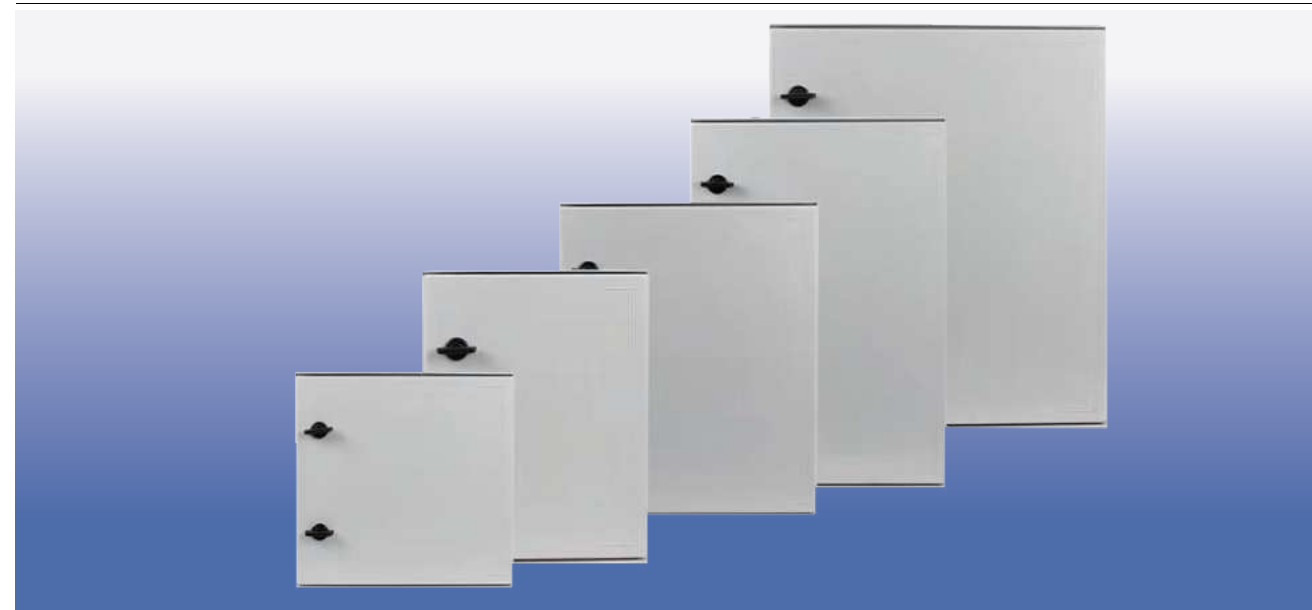
Technical specifications:

- Standard: IEC60439 IEC61000
- Approval: CE, RoHS, HF test, IK test, ISO9001
- Protection grade: IP66
- Color of base: Gray
- The color of door: Transparent
- Mounting type: Surface
- Material: DB box shell: PC; Zero bar/earth bar: copper
- Fire resistance: 850°C/30s
- Ambient temperature (°C): -5~+40, 50% humidity permitted under max+40°C
- Storage temperature (°C): -40~+75

Models:

Waterproof Distribution Boards

| Code | Din Modules | Pack |
|---------|-------------|------|
| LWHC-4 | 4 Modules | 30 |
| LWHC-6 | 6 Modules | 20 |
| LWHC-9 | 9 Modules | 20 |
| LWHC-12 | 12 Modules | 20 |
| LWHC-18 | 18 Modules | 10 |
| LWHC-24 | 24 Modules | 10 |
| LWHC-36 | 36 Modules | 10 |



Introduction:

LWSMC series electrical cabinet is a new type switch box, it is made of glass fiber reinforced polyesters. With same strength of metal cabinet but only 1/3 weight of metal cabinet. LWSMC series electrical cabinet is designed to be assembled with various electrical components according to different control function requirement.

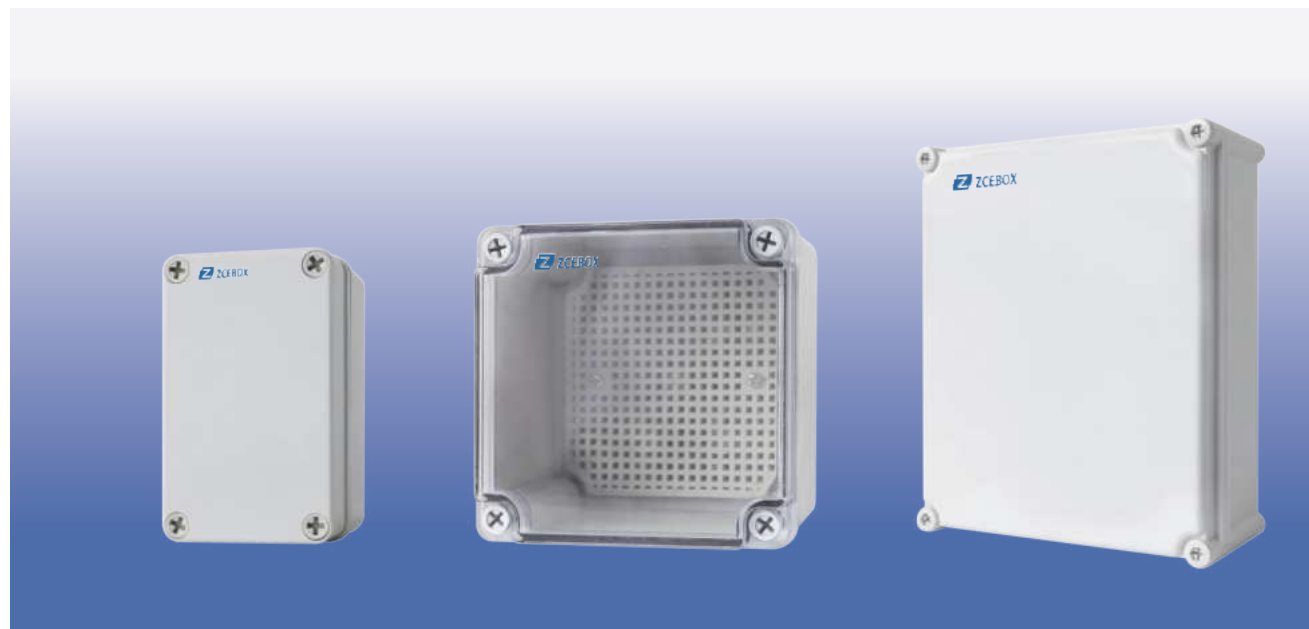
Technical specifications:

- Material of body: Glass fiber reinforced polyesters (SMC)
- Mounting plate: 1.5-2mm steel sheet
- Color of case and door: RAL 7035 or 7032
- Protection degree: IP65, IK09
- Working temperature: -60°C~+150°C
- Lifetime: More than 20 years
- Boxes are completed with: Mounting Plate Locking system with 3mm double bar key
Package with hardware for earth connection and screws to mount all components.
- Note: This cabinet can be modified as customer's requirement such as install transparent window or fix inner door

Models:

Waterproof Polyester Cabinet

| Code | Dimension(H*W*Dmm) | Pack |
|-------------|--------------------|------|
| LWSMC302514 | 300X250X140 | 1 |
| LWSMC403020 | 400X300X200 | 1 |
| LWSMC404020 | 400X400X200 | 1 |
| LWSMC504020 | 500X400X200 | 1 |
| LWSMC604023 | 600X400X230 | 1 |
| LWSMC605023 | 600X500X230 | 1 |
| LWSMC806030 | 800X600X300 | 1 |



Introduction:

This junction box is made of high-quality ABS or PC material, and designed to be assembled with various electrical components according to different control function requirements. It can be widely used in indoor and outdoor electrical, communication and fire equipment, ironmaking & steelmaking, Stone oil chemical, electronic plants.

Technical specifications:

- Standard: IEC60529 IEC60670
- Approval: CE, RoHS, HF test and IK test, ISO9001
- Protection degree: IP67
- Material: ABS, PC
- Ambient temperature(°C): -5~+40, max.95% humidity
- Storage temperature(°C): -40~+75

Models:

Waterproof IP67 Enclosure

| Code | Dimension(H*W*Dmm) | Pack |
|------------|--------------------|------|
| LWHI060505 | 65X55X50 | 400 |
| LWHI090605 | 95X65X55 | 280 |
| LWHI101007 | 100X100X75 | 135 |
| LWHI110804 | 110X80X45 | 190 |
| LWHI110807 | 110X80X75 | 156 |
| LWHI110808 | 110X80X85 | 108 |
| LWHI130807 | 130X80X70 | 108 |
| LWHI130808 | 130X80X85 | 90 |
| LWHI180807 | 180X80X70 | 74 |
| LWHI250807 | 250X80X70 | 54 |

Waterproof IP67 Enclosure

| Code | Dimension(H*W*Dmm) | Pack |
|------------|--------------------|------|
| LWHI250808 | 250X80X85 | 48 |
| LWHI121207 | 125x125x75 | 72 |
| LWHI121210 | 125x125x100 | 54 |
| LWHI171207 | 175x125x75 | 54 |
| LWHI171210 | 175x125x100 | 60 |
| LWHI171409 | 170x140x95 | 45 |
| LWHI171710 | 175x175x100 | 32 |
| LWHI201507 | 200x150x75 | 64 |
| LWHI201510 | 200x150x100 | 48 |
| LWHI201513 | 200x150x130 | 40 |
| LWHI251510 | 250x150x100 | 28 |
| LWHI251513 | 250x150x130 | 30 |
| LWHI202009 | 200x200x95 | 42 |
| LWHI202013 | 200x200x130 | 30 |
| LWHI281913 | 280x190x130 | 20 |
| LWHI281918 | 280x190x180 | 14 |
| LWHI282813 | 280x280x130 | 14 |
| LWHI282818 | 280x280x180 | 8 |
| LWHI342813 | 340x280x130 | 12 |
| LWHI342818 | 340x280x180 | 8 |
| LWHI382813 | 380x280x130 | 10 |
| LWHI382818 | 380x280x180 | 7 |
| LWHI381913 | 380x190x130 | 15 |
| LWHI381918 | 380x190x180 | 9 |



Introduction:

It is made of ABS material, with elegant external appearance and firm performance. Cover and bottom are combined by metal screws.

Technical specifications:

- Standard: IEC60529 IEC60670
- Approval: CE, RoHS, HF test and IK test, ISO9001
- Protection degree: IP65/IP55
- Materials: ABS
- Ambient temperature(°C): -5~+ 40
- Storage temperature(°C): 40-+75 max.95%, humidity

Models:

Waterproof Junction Boxes

| Code | Dimension(W*H*Dmm) | Pack | Holes |
|------------|--------------------|------|-------|
| LWBA0505 | 50X50 | 300 | 4/28 |
| LWBA0805 | 80X50 | 240 | 4/28 |
| LWBA080805 | 85X85X50 | 200 | 7/28 |
| LWBA101007 | 100X100X70 | 100 | 7/28 |
| LWBA151107 | 150X110X70 | 60 | 10/28 |
| LWBA151507 | 150X150X70 | 60 | 7/28 |
| LWBA201007 | 200X100X70 | 60 | 8/28 |
| LWBA201508 | 200X150X80 | 40 | 10/36 |
| LWBA202008 | 200X200X80 | 30 | 12/36 |
| LWBA252008 | 250X200X80 | 40 | 12/36 |
| LWBA302512 | 300X250X120 | 20 | 12/36 |
| LWBA403512 | 400X350X120 | 10 | 16/36 |

Waterproof Junction Boxes

| Code | Dimension(W*H*Dmm) | Pack | Holes |
|------------|--------------------|------|-------|
| LWBT0505 | 50X50 | 300 | 4/28 |
| LWBT0805 | 80X50 | 240 | 4/28 |
| LWBT080805 | 85X85X50 | 200 | 7/28 |
| LWBT101007 | 100X100X70 | 100 | 7/28 |
| LWBT151107 | 150X110X70 | 60 | 10/28 |
| LWBT151507 | 150X150X70 | 60 | 7/28 |
| LWBT201007 | 200X100X70 | 60 | 8/28 |
| LWBT201508 | 200X150X80 | 40 | 10/36 |
| LWBT202008 | 200X200X80 | 30 | 12/36 |
| LWBT252008 | 250X200X80 | 40 | 12/36 |
| LWBT302512 | 300X250X120 | 20 | 12/36 |
| LWBT403512 | 400X350X120 | 10 | 16/36 |



Introduction:

Made of strengthening ABS and PC material, the enclosure has beautiful appearance and high plasticity. LWHY series junction box is suitable for terminal boxes, distribution panels, instrument boxes, electrical equipment boxes and control boxes.

Technical specifications:

- Standard: IEC60529 IEC60670
- Approval: CE, RoHS, HF test and IK test, ISO9001
- Protection degree: IP66
- Material: ABS, PC
- Ambient temperature(°C): -5~+40, max.95% humidity
- Storage temperature(°C): -40~+75

Models:

Waterproof IP66 Enclosure

| Code | Dimension(W*H*Dmm) | Pack |
|------------|--------------------|------|
| LWHY101507 | 100X150X70 | 60 |
| LWHY102007 | 100X200X70 | 50 |
| LWHY151509 | 150X150X90 | 30 |
| LWHY172211 | 170X220X110 | 30 |
| LWHY192914 | 190X290X140 | 20 |
| LWHY293916 | 290X390X160 | 6 |
| LWHY333313 | 330X330X130 | 10 |
| LWHY203016 | 200X300X160 | 12 |
| LWHY203017 | 200X300X170 | 12 |

Waterproof IP66 Enclosure

| Code | Dimension(W*H*Dmm) | Pack |
|------------|--------------------|------|
| LWHY203018 | 200X300X180 | 12 |
| LWHY303017 | 300X300X170 | 6 |
| LWHY303018 | 300X300X180 | 6 |
| LWHY304017 | 300X400X170 | 6 |
| LWHY304018 | 300X400X180 | 6 |
| LWHY304023 | 300X400X230 | 12 |
| LWHY405020 | 400X500X200 | 3 |
| LWHY406022 | 400X600X220 | 3 |
| LWHY506022 | 500X600X220 | 3 |



Introduction:

Made of strength ABS and PS material with nylon screws, the advantage of this enclosure is high cost performance. With IP65 protect level, the enclosure can be used outdoor as junction box to protect connectors and switches.

Technical specifications:

- Standard: IEC60529 IEC60670
- Approval: CE, RoHS, HF test and IK test, ISO9001
- Protection degree: IP65
- Material: ABS
- Ambient temperature(°C): -5~+40, max.95% humidity
- Storage temperature(°C): -40~+75

Models:

Waterproof Junction Boxes

| Code | Dimension(H*W*Dmm) | Pack |
|------------|--------------------|------|
| LWBM201510 | 200X150X100 | 20 |
| LWBM202010 | 200X200X100 | 20 |
| LWBM302010 | 300X200X100 | 10 |



Introduction:

This waterproof window is made of high-quality PC material designed to be assembled to different material enclosures(metal or plastic) to protect MCB or other electrical apparatus element.With distinctive design and structure,the protection level reach IP67 and IK09. Can be widely used in Indoor and outdoor electrical , Communicate and fire equipment, Ironmaking & Steelmaking , Stone oil chemical, electronic plants.

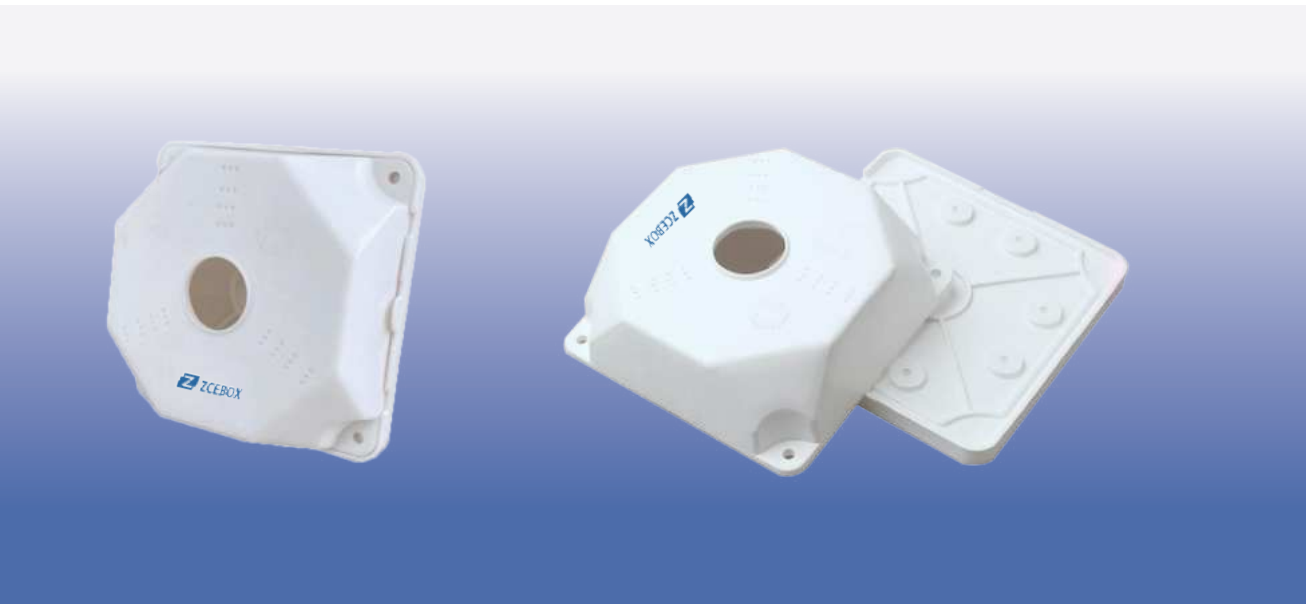
Technical specifications:

- Standard: IEC 60529/EN60309
- Approval: CE, RoHS, HF test and IK test, ISO9001
- Protection degree: IP67
- Material: High quality PC
- Color: Transparent cover and grey body
- Temperature range: -40°C-+80°C

Models:

Waterproof Windows

| Code | Dimension(H*W*Dmm) | Pack |
|-----------|--------------------|------|
| LWHFSC-2 | 101X57X28 | 200 |
| LWHFSC-3 | 101X75X28 | 160 |
| LWHFSC-4 | 101X93X28 | 120 |
| LWHFSC-5 | 129.5X107X32.5 | 96 |
| LWHFSC-6 | 101X124X28 | 96 |
| LWHFSC-8 | 101X160X28 | 72 |
| LWHFSC-10 | 101X196X28 | 50 |
| LWHFSC-12 | 101X232X28 | 50 |
| LWHFSC-13 | 101X250X28 | 45 |
| LWHFSC-16 | 101X304X28 | 50 |
| LWHFSC-18 | 101X340X28 | 65 |



Introduction:

CCTV junction box use for camera installation and cable connection.

Technical specifications:

- Protection level: IP40/IP65
- Type: Junction Box
- Color: White
- Matched Camera Models: R25,TA30,CD20CV60,CV90,BQ60,BQ90,PTN60,PTN90,CW60,CW90, BB60,BB90,TA60,TA90
- Accessories optional: Silicone gasket, Expansion screws

Models:

Waterproof Junction Boxes

| Code | Dimension(H*W*Dmm) | Pack |
|------------|--------------------|------|
| LWAZ111105 | 110X110X50 | 126 |
| LWAZ131305 | 130X130X50 | 105 |

Installation example:





Introduction:

PVC junction box is made of robust non-corrosive polyvinyl chloride material. Its advantages are heat and flame resistant and 100% high quality. Its used for convenience outlets, switch boxes or small junction boxes. They are popular for exposed work applications (surface mounted wiring).

Technical specifications:

- Material: PVC
- Color: Orange or Black
- Fire resistance: 960°C/30S
- Size: 100*60*40mm



Introduction:

Metal consumer unit includes SPN and TPN series. SPN series are suitable for single phase circuits and widely used in residential area. TPN series are suitable for three phase circuits and used to protect machines in industrial area.

Technical specifications:

- Range: SPN & TPN - 4, 6, 8, 12ways
- Color: Pearl Ivory & Regal Gray
- Certification: IEC61439-3
- Features: Compact DBs which occupy minimum space

Models:

Metal consumer units

| Code | 2P 100A Isolator | 1P 6A MCB | 1P 16A MCB | 1P 20A MCB | 1P 25A MCB | 1P 32A MCB |
|-----------|------------------|-----------|------------|------------|------------|------------|
| SPN 4way | 1pcs | 1pcs | 1pcs | 1pcs | - | 1pcs |
| SPN 6way | 1pcs | 2pcs | 1pcs | 1pcs | - | 2pcs |
| SPN 8way | 1pcs | 2pcs | 1pcs | 2pcs | - | 3pcs |
| SPN 12way | 1pcs | 3pcs | 3pcs | 2pcs | - | 4pcs |

| Code | 4P 100A Isolator | 1P 6A MCB | 1P 16A MCB | 1P 20A MCB | 1P 25A MCB | 1P 32A MCB |
|-----------|------------------|-----------|------------|------------|------------|------------|
| TPN 4way | 1pcs | 2pcs | 2pcs | 4pcs | - | 4pcs |
| TPN 6way | 1pcs | 3pcs | 4pcs | 5pcs | - | 6pcs |
| TPN 8way | 1pcs | 4pcs | 6pcs | 7pcs | - | 7pcs |
| TPN 12way | 1pcs | 6pcs | 8pcs | 10pcs | - | 12pcs |



Introduction:

Plastic consumer unit is divided into surface and flush mounting type, widely used in all kinds of household power distribution, industrial and commercial buildings.

Technical specifications:

- Range: 2, 4, 6, 8, 12ways
- Color: White
- Certification: IEC61439-3
- Degree of protection: IP40
- Enclosure material: ABS
- Max. Load: 100A
- Max. Voltage: 230/400V AC, 50Hz/60Hz
- Mounting type: Surface & Flush
- Incoming options: Switch-Isolator, MCB & RCD

Models:

Plastic consumer units

| Code | DB Box | 2P 63/100A | 1P 10A C65N | 1P 16A C65N | 1P 20A C65N | 1P 25A C65N | 1P 32A C65N | 1.2mm bus bar | 10mm ² Wire |
|--------|-----------|---------------|----------------|----------------|----------------|----------------|----------------|------------------|---------------------------|
| TSM-2 | 6way box | 1PCS | 1PCS | 1PCS | - | - | - | 1PCS | 1PCS |
| TSM-4 | 8way box | 1PCS | 1PCS | 1PCS | 1PCS | 1PCS | - | 1PCS | 1PCS |
| TSM-6 | 10way box | 1PCS | 1PCS | 1PCS | 1PCS | 1PCS | 2PCS | 1PCS | 1PCS |
| TSM-8 | 12way box | 1PCS | 1PCS | 1PCS | 2PCS | 2PCS | 2PCS | 1PCS | 1PCS |
| TSM-12 | 18way box | 1PCS | 2PCS | 2PCS | 3PCS | 3PCS | 2PCS | 1PCS | 1PCS |



Introduction:

The solar combiner box combines multiple DC inputs from a solar array. It improves overall safety and ease of installation.

Strong adaptability:

- IP65 design, waterproof, anti dust and anti ultraviolet.
- Strict test for high and low temperature, used widely.
- The simple installation, the simplified system wiring, the convenient wiring.

Models:

Solar Combiner Box

| Code | Max Voltage | Max input current / string | Input strings | No. of inverter MPPT | No. of Output strings | Max output current |
|--------------------|-------------|----------------------------|---------------|----------------------|-----------------------|--------------------|
| LWHLX-PV1/1-550V | 550VDC | 15A | 1 | 1 | 1 | 16A |
| LWHLX-PV1/1-1000V | 1000VDC | 15A | 1 | 1 | 1 | 20A |
| LWHLX-PV2/1-550V | 550VDC | 15A | 2 | 1 | 1 | 20A |
| LWHLX-PV2/1-1000V | 1000VDC | 15A | 2 | 1 | 1 | 32A |
| LWHLX-PV4/1-550V | 550VDC | 15A | 4 | 1 | 1 | 50A |
| LWHLX-PV4/1-1000V | 1000VDC | 15A | 4 | 1 | 1 | 63A |
| LWHLX-PV4/2-550V | 550VDC | 15A | 4 | 2 | 2 | 20A |
| LWHLX-PV4/2-1000V | 1000VDC | 15A | 4 | 2 | 2 | 32A |
| LWHLX-PV6/1-1000V | 1000VDC | 15A | 6 | 1 | 1 | 32A |
| LWHLX-PV6/2-1000V | 1000VDC | 15A | 6 | 2 | 2 | 40A |
| LWHLX-PV6/3-1000V | 1000VDC | 15A | 6 | 3 | 3 | 32A |
| LWHLX-PV8/1-1000V | 1000VDC | 15A | 8 | 1 | 1 | 125A |
| LWHLX-PV8/2-1000V | 1000VDC | 15A | 8 | 2 | 2 | 125A |
| LWHLX-PV12/1-1000V | 1000VDC | 15A | 12 | 1 | 1 | 160A |
| LWHLX-PV16/1-1000V | 1000VDC | 15A | 16 | 1 | 1 | 200A |



Features:

Miniature Circuit breaker: Suitable for general receptacles and equipment with high starting current, such as motors, washing machines, refrigerators, etc., to prevent short circuit and overload.

Technical specifications:

- Comply with: IEC60898-1
- Approvals: CE, CB
- Rated voltage: 230/400V AC
- Poles: 1P 2P 3P 4P
- Tripping curve: B,C,D
- Rated breaking capacity: 4500/6000A
- Electrical life: 4000
- Mechanical life:10000

Curve C Model:

| Code | Poles | Rated Current (Amp) |
|------------|-------|---------------------|
| LWB1-C6-1 | 1 | 6 |
| LWB1-C10-1 | 1 | 10 |
| LWB1-C16-1 | 1 | 16 |
| LWB1-C20-1 | 1 | 20 |
| LWB1-C25-1 | 1 | 25 |
| LWB1-C32-1 | 1 | 32 |
| LWB1-C40-1 | 1 | 40 |
| LWB1-C50-1 | 1 | 50 |
| LWB1-C63-1 | 1 | 63 |

| Code | Poles | Rated Current (Amp) |
|------------|-------|---------------------|
| LWB1-C6-2 | 2 | 6 |
| LWB1-C10-2 | 2 | 10 |
| LWB1-C16-2 | 2 | 16 |
| LWB1-C20-2 | 2 | 20 |
| LWB1-C25-2 | 2 | 25 |
| LWB1-C32-2 | 2 | 32 |
| LWB1-C40-2 | 2 | 40 |
| LWB1-C50-2 | 2 | 50 |
| LWB1-C63-2 | 2 | 63 |

| Code | Poles | Rated Current (Amp) |
|------------|-------|---------------------|
| LWB1-C6-3 | 3 | 6 |
| LWB1-C10-3 | 3 | 10 |
| LWB1-C16-3 | 3 | 16 |
| LWB1-C20-3 | 3 | 20 |
| LWB1-C25-3 | 3 | 25 |
| LWB1-C32-3 | 3 | 32 |
| LWB1-C40-3 | 3 | 40 |
| LWB1-C50-3 | 3 | 50 |
| LWB1-C63-3 | 3 | 63 |

| Code | Poles | Rated Current (Amp) |
|------------|-------|---------------------|
| LWB1-C6-4 | 4 | 6 |
| LWB1-C10-4 | 4 | 10 |
| LWB1-C16-4 | 4 | 16 |
| LWB1-C20-4 | 4 | 20 |
| LWB1-C25-4 | 4 | 25 |
| LWB1-C32-4 | 4 | 32 |
| LWB1-C40-4 | 4 | 40 |
| LWB1-C50-4 | 4 | 50 |
| LWB1-C63-4 | 4 | 63 |

MINIATURE CIRCUIT BREAKER
LWBX



Features:

Miniature Circuit breaker: Suitable for general receptacles and equipment with high starting current, such as motors, washing machines, refrigerators, etc., to prevent short circuit and overload.

Technical specifications:

- Comply with: IEC60898-1, IEC60947-2
- Approvals: CE,CB
- Rated voltage: 230/400V AC
- Poles: 1P 2P 3P 4P
- Tripping curve: B,C,D
- Rated breaking capacity: 6000A
- Electrical life: 6000
- Mechanical life:15000

Curve C Model:

| Code | Poles | Rated Current (Amp) |
|------------|-------|---------------------|
| LWBX-C6-1 | 1 | 6 |
| LWBX-C10-1 | 1 | 10 |
| LWBX-C16-1 | 1 | 16 |
| LWBX-C20-1 | 1 | 20 |
| LWBX-C25-1 | 1 | 25 |
| LWBX-C32-1 | 1 | 32 |
| LWBX-C40-1 | 1 | 40 |
| LWBX-C50-1 | 1 | 50 |
| LWBX-C63-1 | 1 | 63 |

| Code | Poles | Rated Current (Amp) |
|------------|-------|---------------------|
| LWBX-C6-2 | 2 | 6 |
| LWBX-C10-2 | 2 | 10 |
| LWBX-C16-2 | 2 | 16 |
| LWBX-C20-2 | 2 | 20 |
| LWBX-C25-2 | 2 | 25 |
| LWBX-C32-2 | 2 | 32 |
| LWBX-C40-2 | 2 | 40 |
| LWBX-C50-2 | 2 | 50 |
| LWBX-C63-2 | 2 | 63 |

MINIATURE CIRCUIT BREAKER
LWBX

| Code | Poles | Rated Current (Amp) |
|------------|-------|---------------------|
| LWBX-C6-3 | 3 | 6 |
| LWBX-C10-3 | 3 | 10 |
| LWBX-C16-3 | 3 | 16 |
| LWBX-C20-3 | 3 | 20 |
| LWBX-C25-3 | 3 | 25 |
| LWBX-C32-3 | 3 | 32 |
| LWBX-C40-3 | 3 | 40 |
| LWBX-C50-3 | 3 | 50 |
| LWBX-C63-3 | 3 | 63 |

| Code | Poles | Rated Current (Amp) |
|------------|-------|---------------------|
| LWBX-C6-4 | 4 | 6 |
| LWBX-C10-4 | 4 | 10 |
| LWBX-C16-4 | 4 | 16 |
| LWBX-C20-4 | 4 | 20 |
| LWBX-C25-4 | 4 | 25 |
| LWBX-C32-4 | 4 | 32 |
| LWBX-C40-4 | 4 | 40 |
| LWBX-C50-4 | 4 | 50 |
| LWBX-C63-4 | 4 | 63 |



Features:

Miniature Circuit breaker: Suitable for general receptacles and equipment with high starting current, such as motors, washing machines, refrigerators, etc., to prevent short circuit and overload.

Technical specifications:

- Comply with: IEC60898-1, IEC60947-2
- Approvals: CE, CB
- Rated voltage: 230/400V AC
- Poles: 1P 2P 3P 4P
- Tripping curve: B, C, D
- Rated breaking capacity: 10000A
- Electrical life: 6000
- Mechanical life: 15000

Curve C Model:

| Code | Poles | Rated Current (Amp) | Code | Poles | Rated Current (Amp) |
|------------|-------|---------------------|------------|-------|---------------------|
| LWB6-C6-1 | 1 | 6 | LWB6-C6-2 | 2 | 6 |
| LWB6-C10-1 | 1 | 10 | LWB6-C10-2 | 2 | 10 |
| LWB6-C16-1 | 1 | 16 | LWB6-C16-2 | 2 | 16 |
| LWB6-C20-1 | 1 | 20 | LWB6-C20-2 | 2 | 20 |
| LWB6-C25-1 | 1 | 25 | LWB6-C25-2 | 2 | 25 |
| LWB6-C32-1 | 1 | 32 | LWB6-C32-2 | 2 | 32 |
| LWB6-C40-1 | 1 | 40 | LWB6-C40-2 | 2 | 40 |
| LWB6-C50-1 | 1 | 50 | LWB6-C50-2 | 2 | 50 |
| LWB6-C63-1 | 1 | 63 | LWB6-C63-2 | 2 | 63 |

| Code | Poles | Rated Current (Amp) | Code | Poles | Rated Current (Amp) |
|------------|-------|---------------------|------------|-------|---------------------|
| LWB6-C6-3 | 3 | 6 | LWB6-C6-4 | 4 | 6 |
| LWB6-C10-3 | 3 | 10 | LWB6-C10-4 | 4 | 10 |
| LWB6-C16-3 | 3 | 16 | LWB6-C16-4 | 4 | 16 |
| LWB6-C20-3 | 3 | 20 | LWB6-C20-4 | 4 | 20 |
| LWB6-C25-3 | 3 | 25 | LWB6-C25-4 | 4 | 25 |
| LWB6-C32-3 | 3 | 32 | LWB6-C32-4 | 4 | 32 |
| LWB6-C40-3 | 3 | 40 | LWB6-C40-4 | 4 | 40 |
| LWB6-C50-3 | 3 | 50 | LWB6-C50-4 | 4 | 50 |
| LWB6-C63-3 | 3 | 63 | LWB6-C63-4 | 4 | 63 |



Features:

Used in residential building, non-residential buidling, energy sources, industry and infrastruc-
ture, with function of isolation.

Technical specifications:

- Comply with: IEC60947-3
- Approvals: CE, CB
- Rated voltage: 230/400V AC
- Poles: 2P 4P
- Electrical life: 10000
- Mechanical life: 20000

Model 2P 4P:

| Code | Poles | Rated Current(A) |
|-------------|-------|------------------|
| LWB1G-32-2 | 2 | 32 |
| LWB1G-63-2 | 2 | 63 |
| LWB1G-100-2 | 2 | 100 |
| LWB1G-32-4 | 4 | 32 |
| LWB1G-63-4 | 4 | 63 |
| LWB1G-100-4 | 4 | 100 |



Features:

DC circuit breaker is used in lines with DC rated voltage up to 1000V and rated current up to
63A for load and short circuit protection, apply DC systems in tele-communication and solar
system.

Technical specifications:

- Comply with: IEC60947-2
- Approvals: CE
- Rated voltage: 125V/250V DC(1P)、 250V/500V DC(2P)、 500V/1000V DC(4P)
- Rated current: 1A/2A/3A/4A/6A/10A/13A/16A/20A/25A/32A/40A/50A/63A
- Poles: 1P/2P/4P
- Tripping curve: C(7~10)In
- Rated breaking capacity: 6kA(1P 250V/2P 500V/4P 1000V); 10kA(1P 125V/2P 250V/4P 500V)
- Mechanical life: 20000
- Electrical life: 1500

Curve C Model:

| Code | Poles | Rated Current (Amp) | Code | Poles | Rated Current (Amp) | Code | Poles | Rated Current (Amp) |
|-----------|-------|---------------------|-----------|-------|---------------------|-----------|-------|---------------------|
| Z45-C6-1 | 1 | 6 | Z45-C6-2 | 2 | 6 | Z45-C6-4 | 4 | 6 |
| Z45-C10-1 | 1 | 10 | Z45-C10-2 | 2 | 10 | Z45-C10-4 | 4 | 10 |
| Z45-C16-1 | 1 | 16 | Z45-C16-2 | 2 | 16 | Z45-C16-4 | 4 | 16 |
| Z45-C20-1 | 1 | 20 | Z45-C20-2 | 2 | 20 | Z45-C20-4 | 4 | 20 |
| Z45-C25-1 | 1 | 25 | Z45-C25-2 | 2 | 25 | Z45-C25-4 | 4 | 25 |
| Z45-C32-1 | 1 | 32 | Z45-C32-2 | 2 | 32 | Z45-C32-4 | 4 | 32 |
| Z45-C40-1 | 1 | 40 | Z45-C40-2 | 2 | 40 | Z45-C40-4 | 4 | 40 |
| Z45-C50-1 | 1 | 50 | Z45-C50-2 | 2 | 50 | Z45-C50-4 | 4 | 50 |
| Z45-C63-1 | 1 | 63 | Z45-C63-2 | 2 | 63 | Z45-C63-4 | 4 | 63 |



Features:

Used in residential building, non-residential buidling, energy sources, industry and infrastru-ct-ure, with function of switching, isolation and controlling. Protection against the effects of inusoidal alternating earth fault currents, indirect contacts and additional protection agianst direct contacts, fire hazard caused by insulation faults.

Technical specifications:

- Comply with: IEC61008-1
- Approvals: CE
- Residual current protection type: Electromagnetic/Electronic
- Rated voltage: 230/400V AC
- Poles: 2P 4P
- Operating characteristic: AC and A type
- Rated residual operating current: 10,30,100,300mA
- Electrical life: 10000
- Mechanical life: 20000

Type AC 30mA:

| Code | Poles | Rated residual current(mA) | Rated Current(Amp) |
|----------------|-------|----------------------------|--------------------|
| LWL1-C16/10-2 | 2 | 10 | 16 |
| LWL1-C16/30-2 | 2 | 30 | 16 |
| LWL1-C25/30-2 | 2 | 30 | 25 |
| LWL1-C40/30-2 | 2 | 30 | 40 |
| LWL1-C63/30-2 | 2 | 30 | 63 |
| LWL1-C80/30-2 | 2 | 30 | 80 |
| LWL1-C100/30-2 | 2 | 30 | 100 |
| LWL1-C16/30-4 | 4 | 30 | 16 |
| LWL1-C25/30-4 | 4 | 30 | 25 |
| LWL1-C40/30-4 | 4 | 30 | 40 |
| LWL1-C63/30-4 | 4 | 30 | 63 |
| LWL1-C80/30-4 | 4 | 30 | 80 |
| LWL1-C100/30-4 | 4 | 30 | 100 |



Features:

Used in residential building, non-residential buidling, energy sources, industry and infrastru-ct-ure, with function of switching, isolation and controlling. Protection against the effects of inusoidal alternating earth fault currents, indirect contacts and additional protection agianst direct contacts, fire hazard caused by insulation faults.

Technical specifications:

- Comply with: IEC61008-1
- Approvals: CE
- Residual current protection type: Electromagnetic/Electronic
- Rated voltage: 230/400V AC
- Poles: 2P 4P
- Operating characteristic: AC and A type
- Rated residual operating current: 10,30,100,300mA
- Electrical life: 6000
- Mechanical life: 15000

Type AC 30mA:

| Code | Poles | Rated residual current(mA) | Rated Current(Amp) |
|---------------|-------|----------------------------|--------------------|
| LWLX-C16/10-2 | 2 | 10 | 16 |
| LWLX-C16/30-2 | 2 | 30 | 16 |
| LWLX-C25/30-2 | 2 | 30 | 25 |
| LWLX-C40/30-2 | 2 | 30 | 40 |
| LWLX-C63/30-2 | 2 | 30 | 63 |
| LWLX-C80/30-2 | 2 | 30 | 80 |
| LWLX-C16/30-4 | 4 | 30 | 16 |
| LWLX-C25/30-4 | 4 | 30 | 25 |
| LWLX-C40/30-4 | 4 | 30 | 40 |
| LWLX-C63/30-4 | 4 | 30 | 63 |
| LWLX-C80/30-4 | 4 | 30 | 80 |



Features:

Used in residential building, non-residential building, energy sources, industry and infrastructure, with function of switching, isolation and controlling. Protection against the effects of inductive alternating earth fault currents, indirect contacts and additional protection against direct contacts, fire hazard caused by insulation faults.

Technical specifications:

- Comply with: IEC61008-1
- Approvals: CE
- Residual current protection type: Electromagnetic/Electronic
- Rated voltage: 230/400V AC
- Poles: 2P 4P
- Operating characteristic: AC and A type
- Rated residual operating current: 10,30,100,300mA
- Electrical life: 6000
- Mechanical life: 15000

Type AC 30mA:

| Code | Poles | Rated residual current(mA) | Rated Current(Amp) |
|---------------|-------|----------------------------|--------------------|
| LWL6-C16/10-2 | 2 | 10 | 16 |
| LWL6-C16/30-2 | 2 | 30 | 16 |
| LWL6-C25/30-2 | 2 | 30 | 25 |
| LWL6-C40/30-2 | 2 | 30 | 40 |
| LWL6-C63/30-2 | 2 | 30 | 63 |
| LWL6-C80/30-2 | 2 | 30 | 80 |
| LWL6-C16/30-4 | 4 | 30 | 16 |
| LWL6-C25/30-4 | 4 | 30 | 25 |
| LWL6-C40/30-4 | 4 | 30 | 40 |
| LWL6-C63/30-4 | 4 | 30 | 63 |
| LWL6-C80/30-4 | 4 | 30 | 80 |

CERTIFICATION

